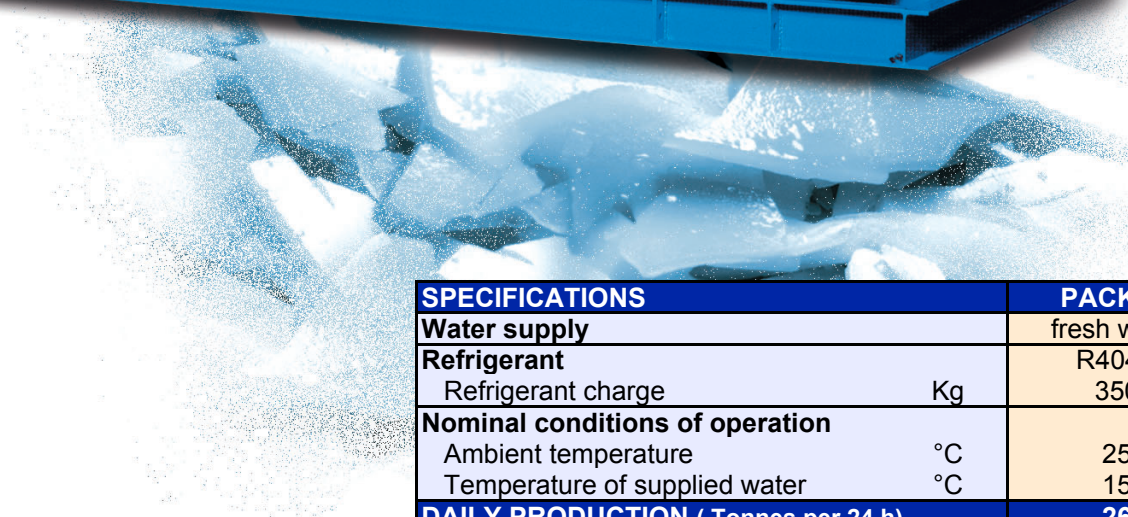
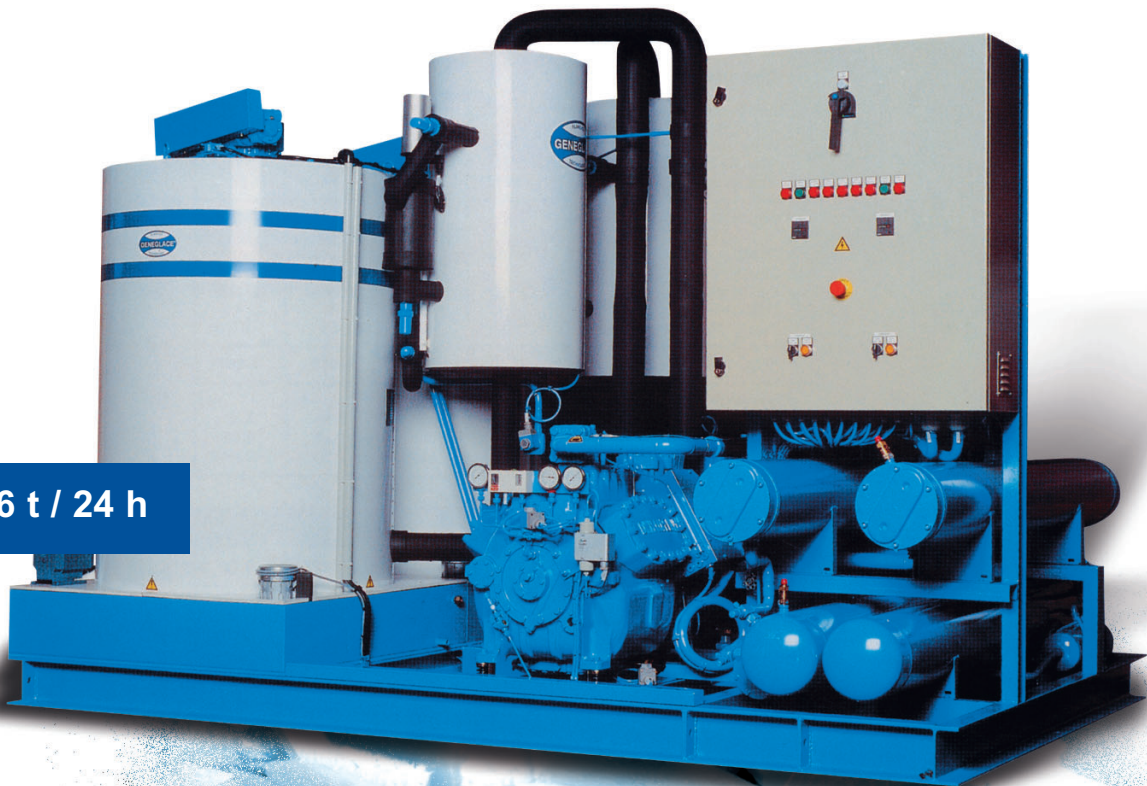


# ICE - PACK 40



26 t / 24 h



SPECIFICATIONS		PACK 40
<b>Water supply</b>		fresh water
<b>Refrigerant</b>		R404A
Refrigerant charge	Kg	350
<b>Nominal conditions of operation</b>		
Ambient temperature	°C	25
Temperature of supplied water	°C	15
<b>DAILY PRODUCTION ( Tonnes per 24 h )</b>		<b>26</b>
Ice thickness	mm	2
Reamer speed	rph	112
Evaporating temperature	°C	-27,5
Liquid feed		LLC
<b>Power supply</b>		
Voltage	V-ph-Hz	400-3-50
Installed power	KVA	168,0
Energy consumption	kWh/t	81
<b>MAIN COMPONENTS</b>		
Compressor		Semi-hermetic
Condenser		water cooled
		with cooling tower
Air flow rate	m <sup>3</sup> /h	27720
Water flow rate	m <sup>3</sup> /h	40
<b>NET WEIGHT</b>	Kg	<b>5000</b>
<b>OVERALL DIMENSIONS</b>		
Length	m	4,00
Width	m	2,20
Height	m	2,30



**GENEGLACE** sas  
 ZAC de la Forêt - 9 rue des Orfèvres  
 44840 Les Sorinières -France  
 Telephone : +33 (0)2 51 19 10 51  
 Fax : +33 (0)2 40 05 73 81  
[www.geneglance.com](http://www.geneglance.com)  
[contact@geneglance.fr](mailto:contact@geneglance.fr)

Models and specifications can be  
 subject to change without notice  
 10/2004

Capital 3 737 000 E - SIREN 444 160 873 RCS Nantes